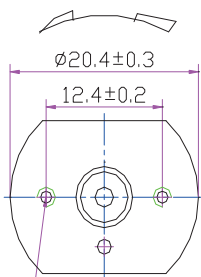


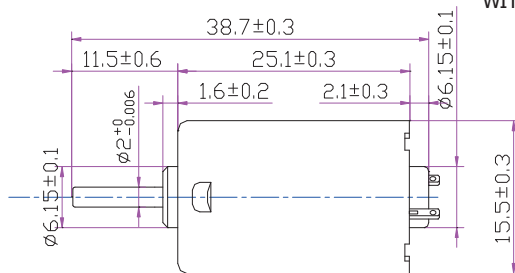
# Micromotors CX.KFF130 Series

## ROTATION



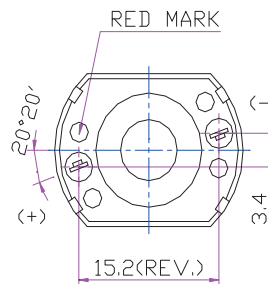
2-M2 TAPPED HOLES

USABLE MACHING SCREW LENGTH 2.0MAX.  
FROM MOTOR MOUNTING SURFACE.

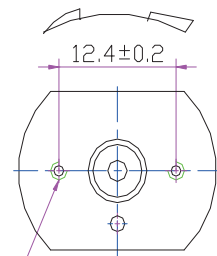


## KFF130SH / KFK130SH

WITH METAL END CAP

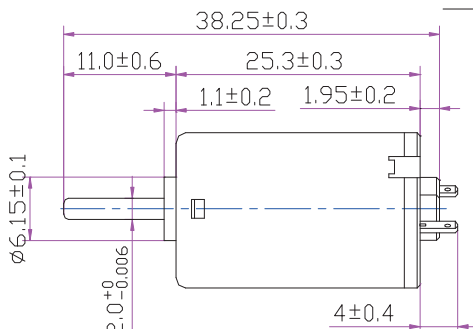


## ROTATION



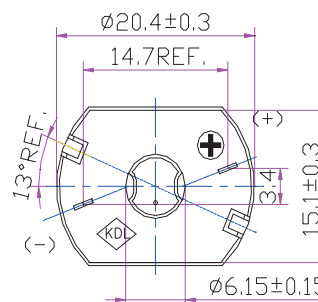
2-M2 TAPPED HOLES

USABLE MALE SCREW LENGTH  
2.0MAX. FROM MOTOR MOUNTING  
SURFACE



## KFF130S

WITH PLASTIC END CAP



WEIGHT: 24g. (APPROX)

UNIT: MILLIMETERS

Model	Voltage		No Load		At Maximum Efficiency					Stall	
	Operating Voltage	Nominal (Constant)	Speed rpm	Current A	Speed rpm	Current A	Torque g-cm	Output W	Eff. %	Torque g-cm	Current A
CX.KFF130S-2190	0.7-3.6	3.0	7000	0.115	5685	0.497	14.1	0.82	55.1	75	2.15
CX.KFF130S-17100	1.2-5.0	3.0	6000	0.10	4735	0.374	12.02	0.58	52.0	57	1.40
CX.KFF130S-15155	1.0-5.0	4.5	6800	0.065	5516	0.279	11.89	0.67	53.5	63	1.20
CX.KFF130S-13180	1.0-6.0	3.0	3600	0.045	2782	0.153	8.18	0.23	50.9	36	0.51
CX.KFF130S-12260	1.0-6.0	3.0	2500	0.030	1880	0.095	6.73	0.13	45.5	28	0.30
CX.KFF130S-09350	3.0-12.0	5.0	3000	0.024	2255	0.073	6.95	0.16	44.3	28	0.22
CX.KFF130S-09350	3.0-12.0	12.0	7500	0.028	6093	0.121	12.76	0.80	54.8	68	0.525
CX.KFF130S-08450	2.4-13.8	12.0	5800	0.032	4407	0.101	13.45	0.61	50.1	56	0.32
CX.KFK130SH-12240	9.4-14.5	13	14130	0.100	11179	0.379	22.97	2.634	53.5	110	1.44
CX.KFK130SH-11310	3.0-12	6.0	4800	0.050	3610	0.152	11.41	0.422	46.4	46	0.46
Cx.KFK130SH-09420	6.0-9.0	12.0	7100	0.055	5261	0.157	15.02	0.811	42.9	58	0.45
General Test Tolerance			± 15%								

**Remark:** KFF130 is precious Metal-Brush Motor-Low Noise Series. KFK130 is Carbon Brush Motor.